

M COLLECTION - FRONT CRANK HEIGHT ADJUSTABLE TABLE (THIN CROSS-LINK)

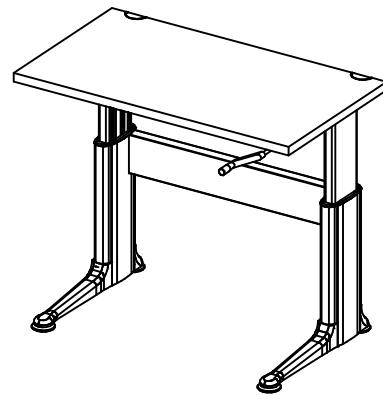
INSTALLATION INSTRUCTIONS

P/N 21135-01 SHEET 1 OF 4

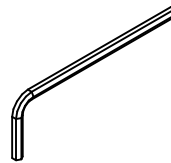
WORK SURFACE SHAPES:



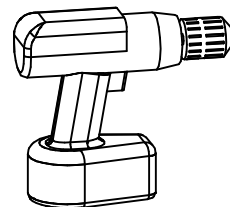
PRODUCTS:



TOOLS REQUIRED:



3/16" ALLEN WRENCH



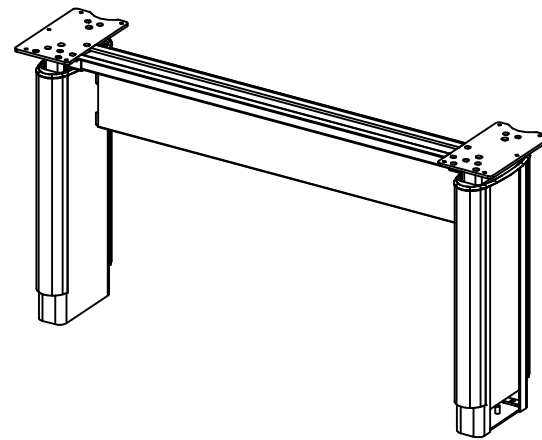
POWER SCREWDRIVER

#2 PHILLIPS DRIVER TIP
#3 PHILLIPS DRIVER TIP

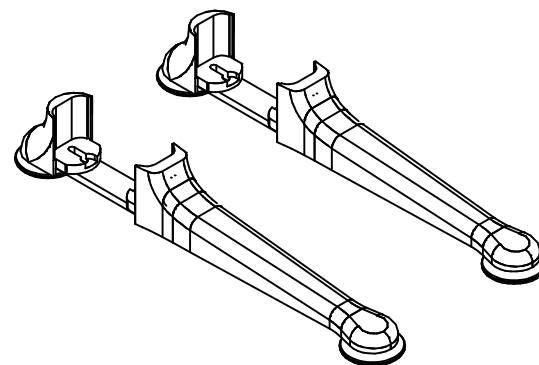
PARTS INCLUDED:

A WORKSURFACE
(SEE SHAPES ABOVE)

B CRANK BASE ASSEMBLY
QTY: ONE (1)



C FOOT ASSEMBLIES
QTY: TWO (2)

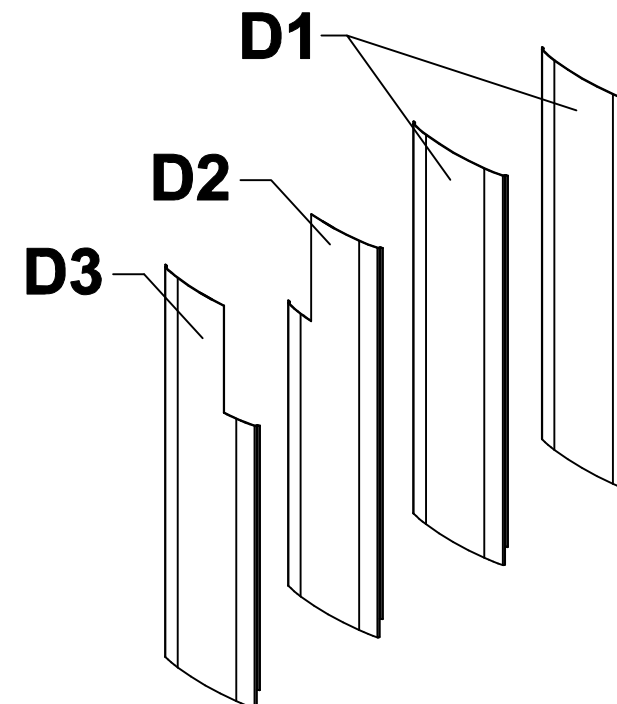


D COLUMN COVER INSERTS
QTY: FOUR (4)

D1 OUTSIDE (LARGE)
QTY: TWO (2)

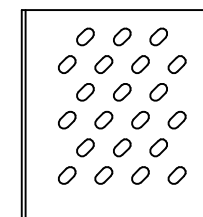
D2 INSIDE NOTCHED RH
QTY: ONE (1)

D3 INSIDE NOTCHED LH
QTY: ONE (1)

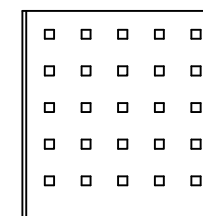


SOLID STEEL SHOWN

D1 OUTSIDE MAY BE PERFORATED

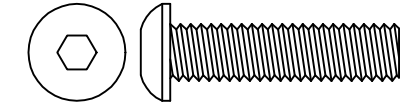


"RAIN" PERFORATION

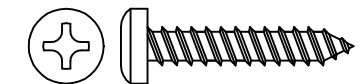


"CITY BLOCK" PERFORATION

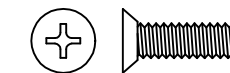
E 5/16-18 X 1 1/4" BUTTON HEAD
SOCKET CAP SCREW
QTY: FOUR (4)



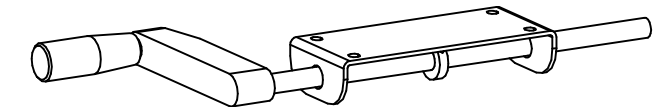
F #12 X 1 1/8" PAN HEAD SCREW
QTY: FOURTEEN (14)



G 10-24 X 5/8" FLAT HEAD SCREW
QTY: TWO (2)



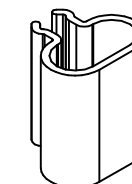
H FRONT CRANK HANDLE / BRACKET ASSEMBLY
(PACKED NESTED WITH PART I)
QTY: ONE (1)



I RETAINER BLOCK WITH HEX SHAFT
(PACKED NESTED WITH PART H)
QTY: ONE (1)



J CORD CLIP
QTY: TWO (2)



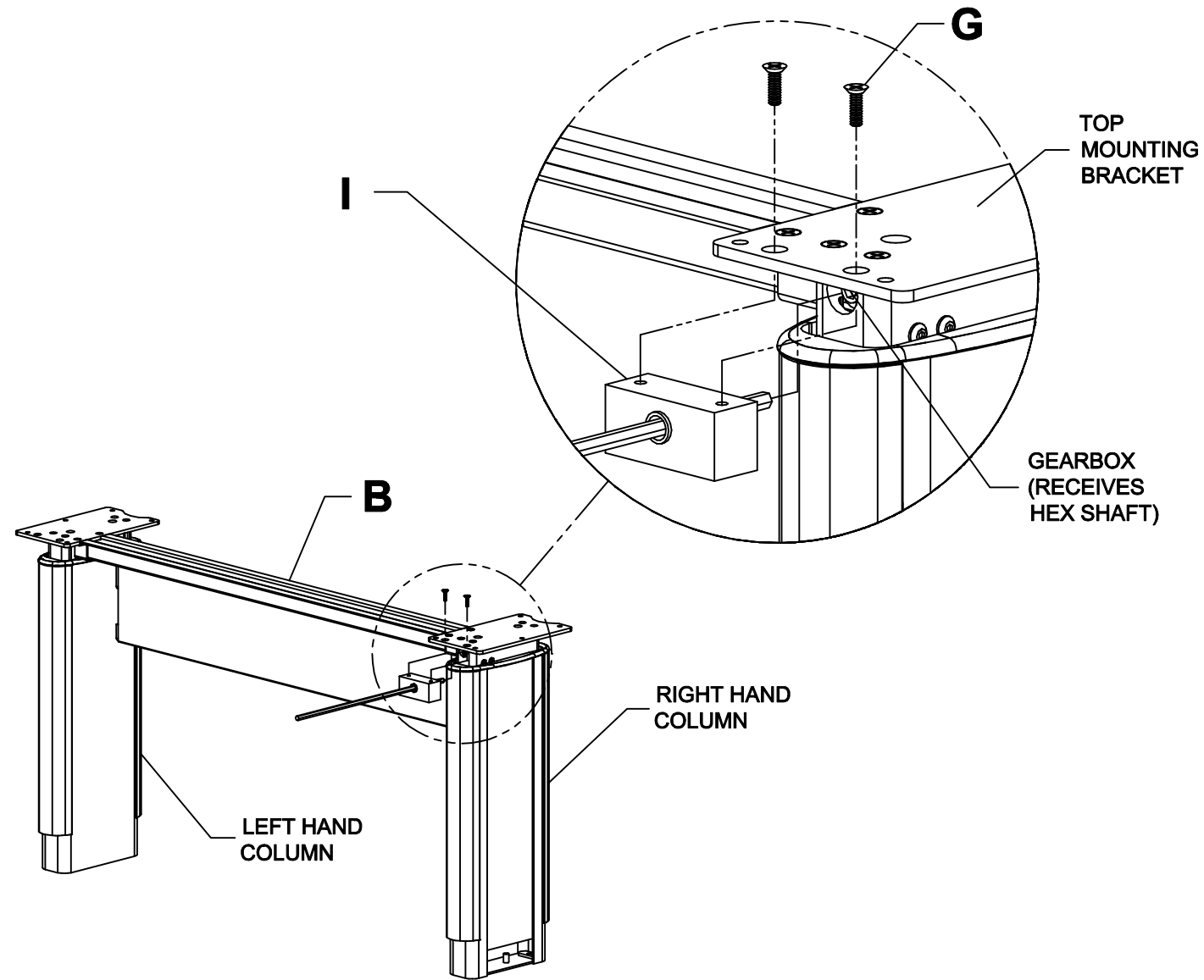
M COLLECTION - FRONT CRANK HEIGHT ADJUSTABLE TABLE (THIN CROSS-LINK)

INSTALLATION INSTRUCTIONS

P/N 21135-01 SHEET 2 OF 4

PROCEDURE:

- 1.** INSERT THE SHORT END OF THE HEX SHAFT WITH FRONT CRANK RETAINER BLOCK INTO THE GEARBOX ON THE LEFT HAND OR RIGHT HAND SIDE OF THE BASE. ATTACH TO THE TOP BRACKET USING TWO (2) 10-24 X 5/8" FLAT HEAD SCREWS.

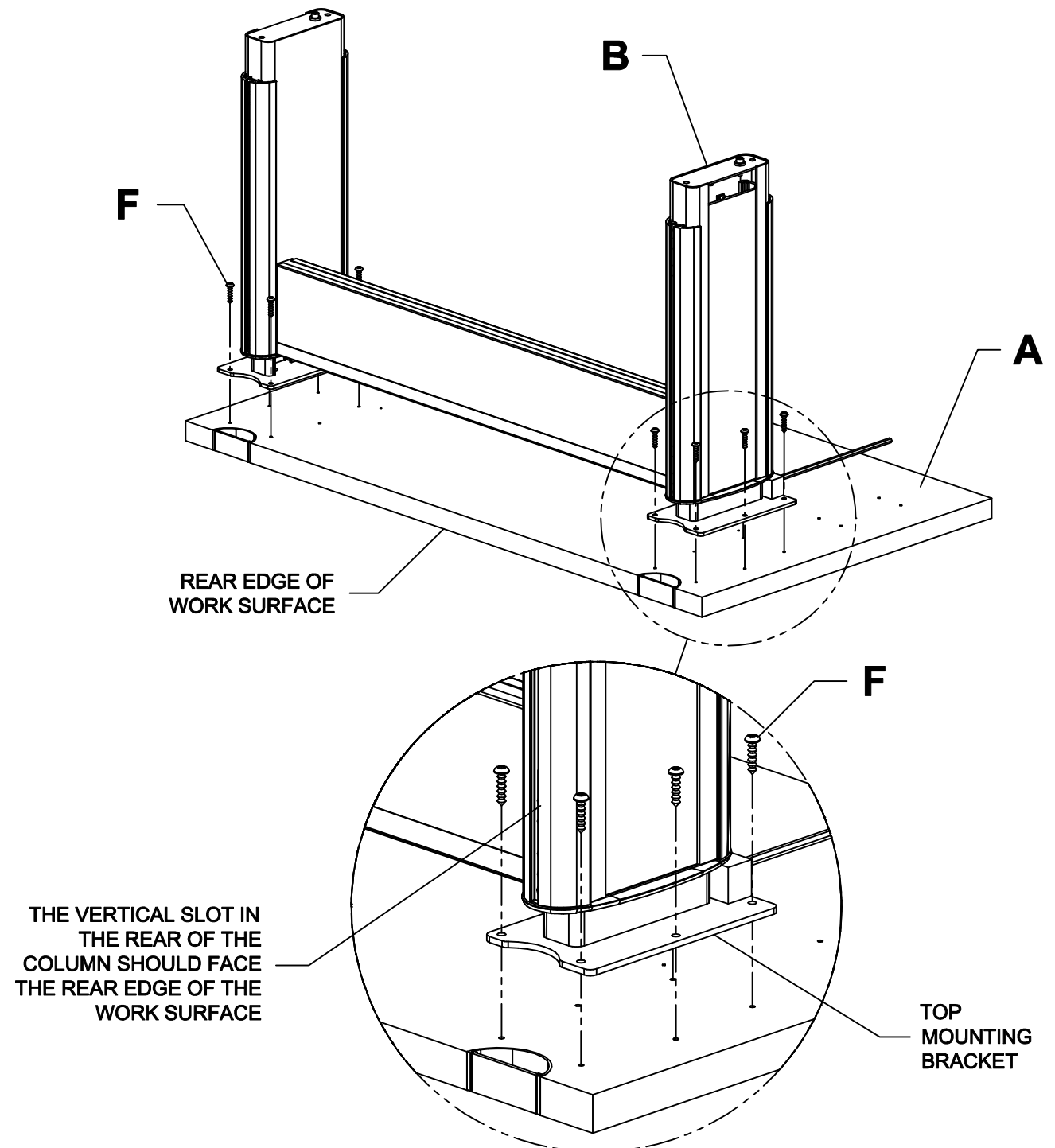


NOTICE

The front crank handle can be installed on either the LH or RH side (as required) with the following exceptions:

- Rectangular Mitered GLM - Install away from the angled cut.
- Curvilinear GLV - Install on the deeper end.
- Extended Corner GLE - Install furthest from the corner.

- 2.** LAY WORK SURFACE UPSIDE DOWN ON A CLEAN SURFACE AND POSITION BASE OVER PRE-DRILLED HOLES. THE VERTICAL SLOTS IN THE REAR OF THE COLUMNS SHOULD FACE THE REAR EDGE OF THE WORK SURFACE. ATTACH BASE TO WORK SURFACE USING FIVE (5) # 12 X 1 1/8" PAN HEAD SCREWS IN EACH TOP MOUNTING BRACKET.



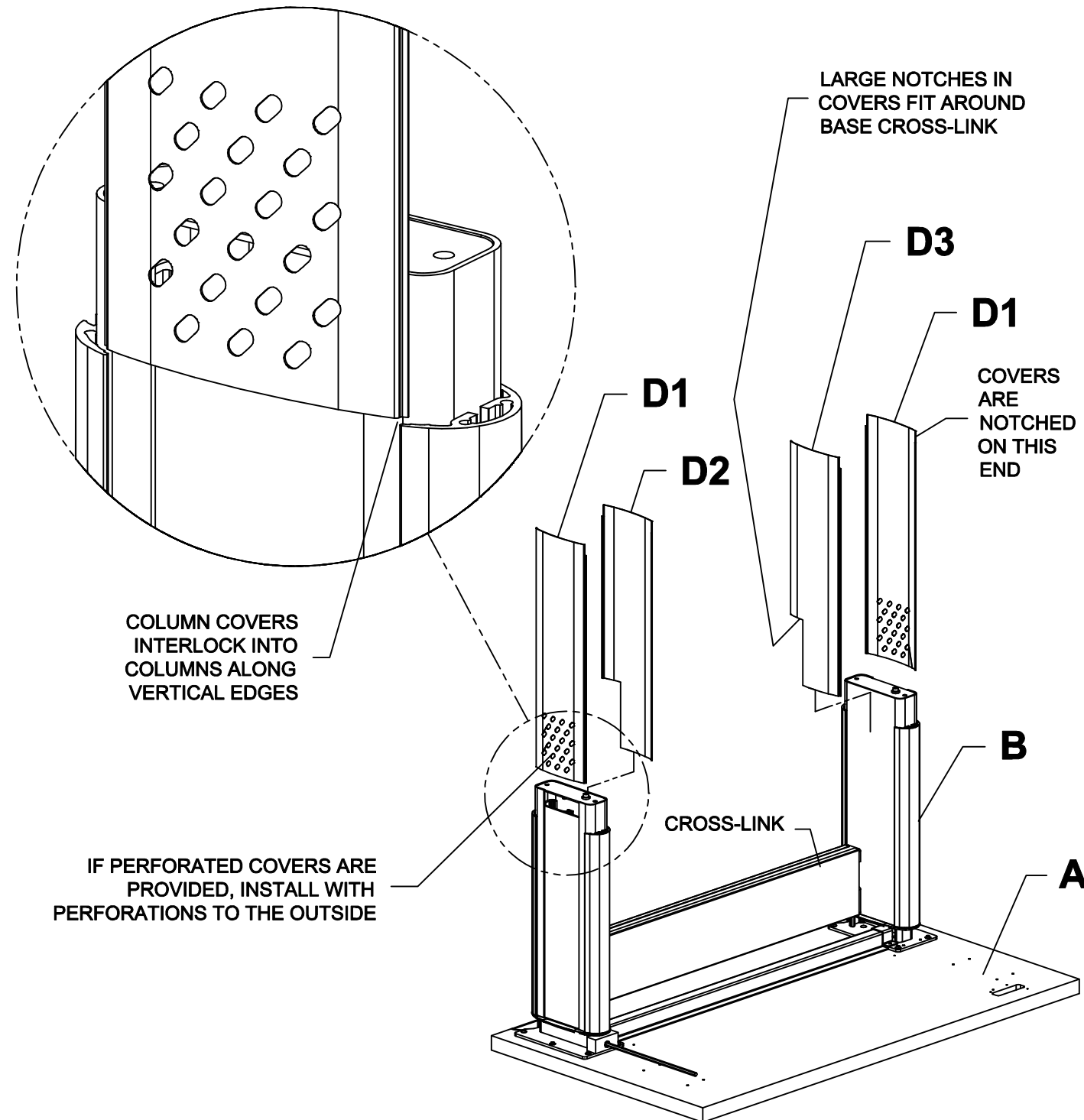
M COLLECTION - FRONT CRANK HEIGHT ADJUSTABLE TABLE (THIN CROSS-LINK)

INSTALLATION INSTRUCTIONS

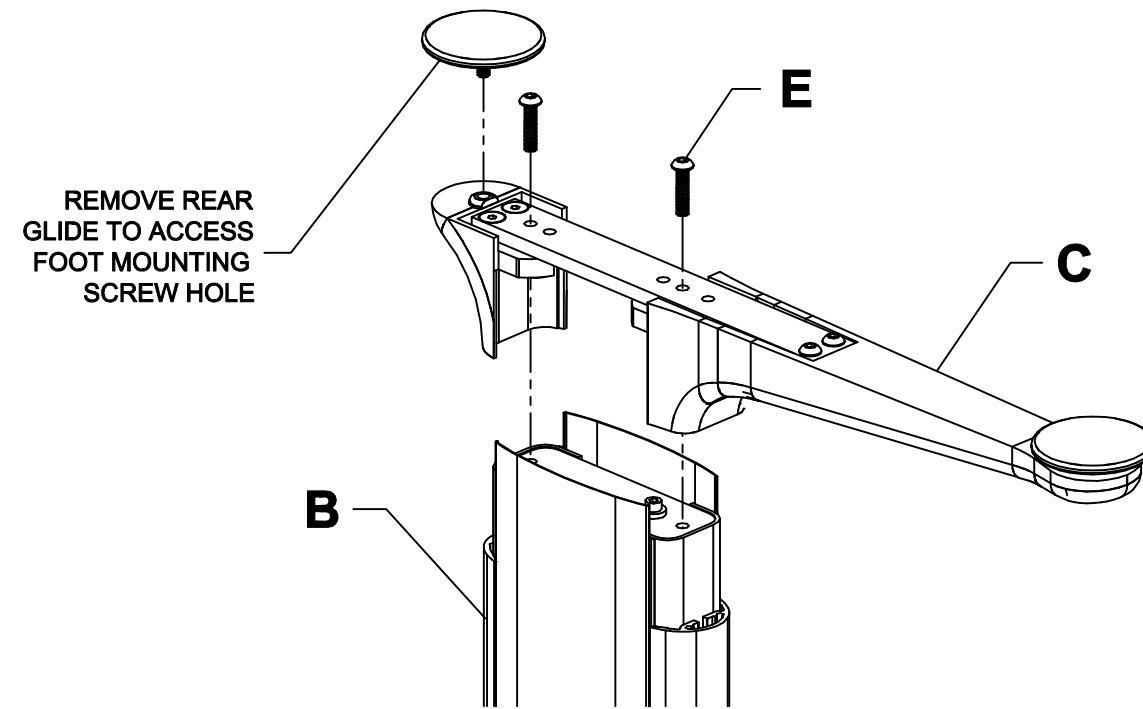
P/N 21135-01 SHEET 3 OF 4

PROCEDURE (CON'T):

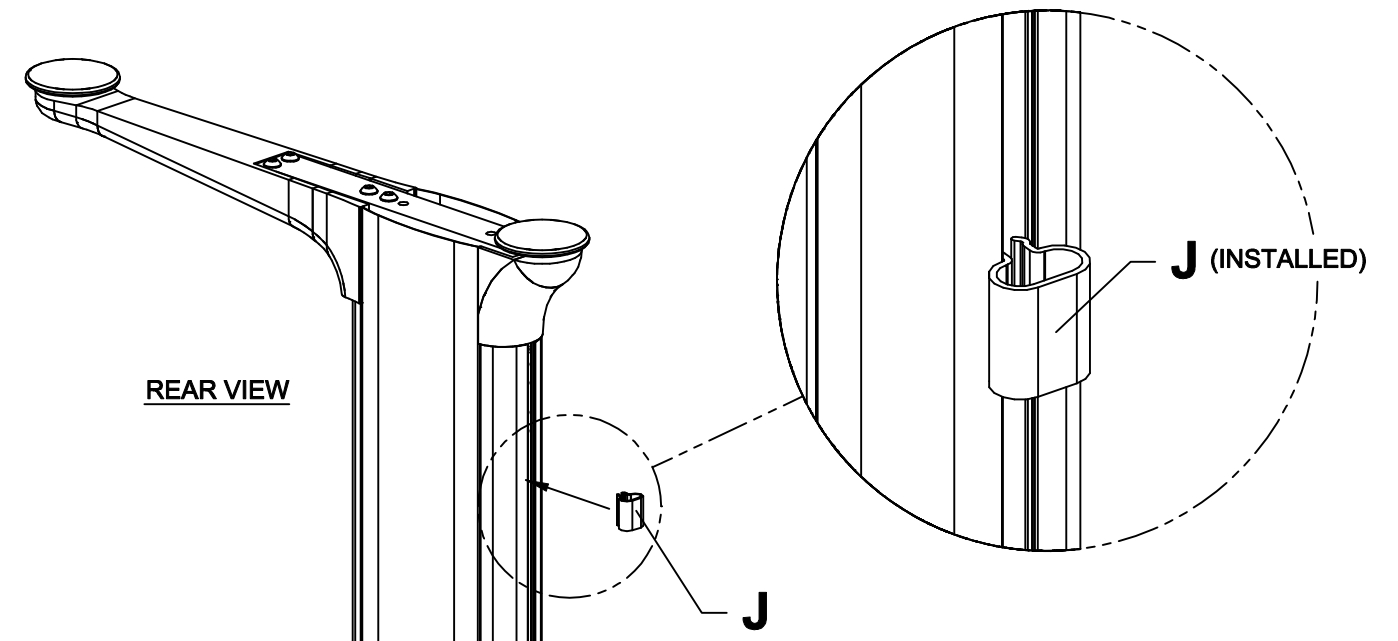
- 3.** INSERT COLUMN COVERS INTO BOTH SIDES OF EACH COLUMN. INSTALL WITH NOTCHES AT ENDS OF COVERS AWAY FROM WORK SURFACE. IF PERFORATED COVERS ARE SUPPLIED, INSTALL WITH PERFORATIONS TO THE OUTSIDE.



- 4.** ATTACH THE FEET USING TWO (2) 5/16-18 X 1 1/4" BUTTON HEAD SOCKET CAP SCREWS PER COLUMN. USE OUTSIDE MOUNTING HOLES IN FEET.



- 5.** CORD CLIPS SNAP FIT INTO VERTICAL SLOTS IN REAR OF COLUMNS



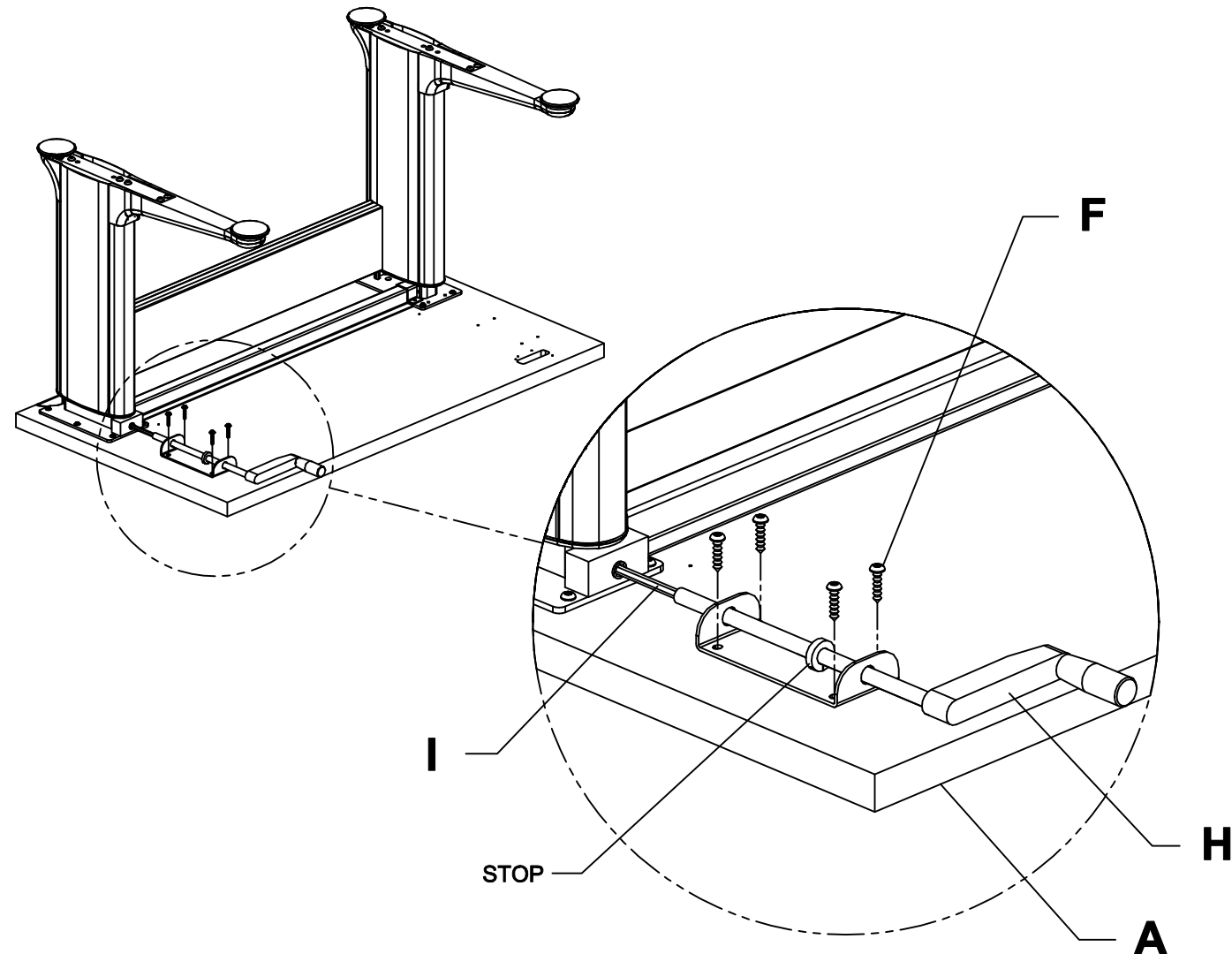
M COLLECTION - FRONT CRANK HEIGHT ADJUSTABLE TABLE (THIN CROSS-LINK)

INSTALLATION INSTRUCTIONS

P/N 21135-01 SHEET 4 OF 4

PROCEDURE (CON'T):

- 6.** SLIDE THE FRONT CRANK HANDLE ONTO THE HEX SHAFT (AS SHOWN). ALIGN BRACKET WITH PRE-DRILLED HOLES IN WORK SURFACE AND SECURE WITH FOUR (4) #12 X 1 1/8" PAN HEAD SCREWS. ENSURE THAT THE HANDLE IS CORRECTLY ALIGNED AND HAS SMOOTH INWARD AND OUTWARD TRAVEL BEFORE TIGHTENING SCREWS. TURN TABLE UPRIGHT AND CHECK FOR PROPER HANDLE OPERATION.



NOTICE

Bracket has slotted holes for adjustment of handle alignment.

Ensure that the front crank handle will conceal completely under the work surface and pull out beyond the edge of the surface for operation. Readjust the stop if required.

- 7.** MOVE TABLE INTO POSITION MAINTAINING PROPER CLEARANCE WITH ADJACENT SURFACES. ADJUST THE GLIDES TO LEVEL THE SURFACE.

