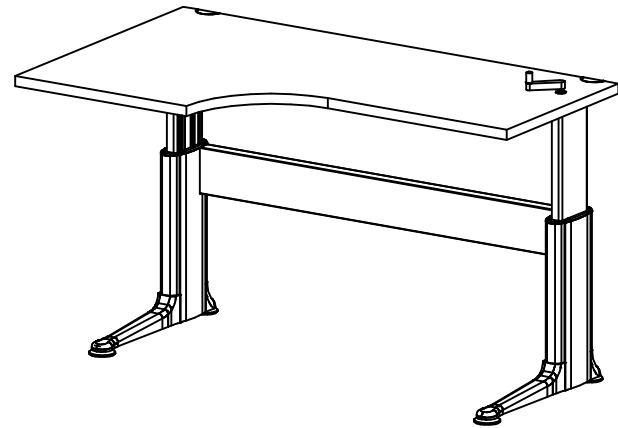


M COLLECTION - TOP CRANK HEIGHT ADJUSTABLE TABLE (THIN CROSS-LINK)

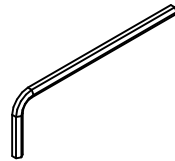
INSTALLATION INSTRUCTIONS

P/N 21134-01 SHEET 1 OF 3

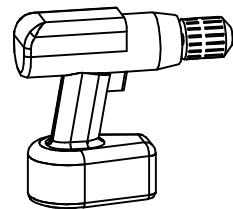
PRODUCTS:



TOOLS REQUIRED:



3/16" ALLEN WRENCH

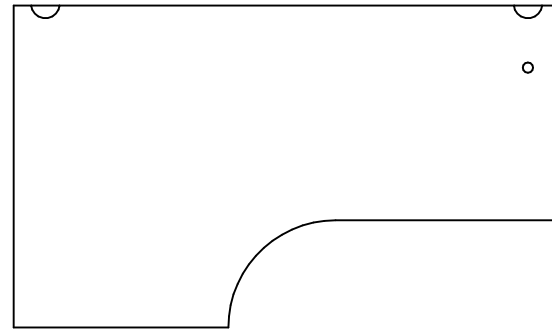


POWER SCREWDRIVER

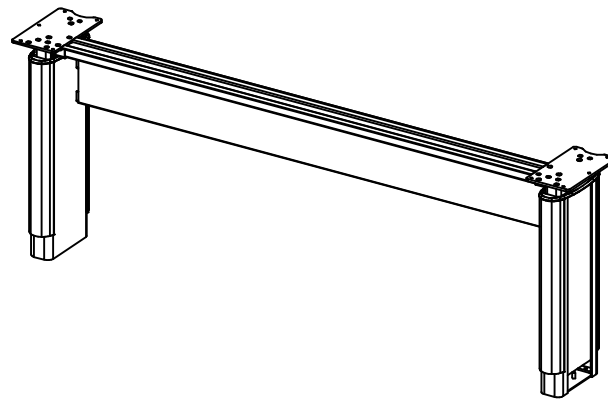
#2 PHILLIPS DRIVER TIP
#3 PHILLIPS DRIVER TIP

PARTS INCLUDED:

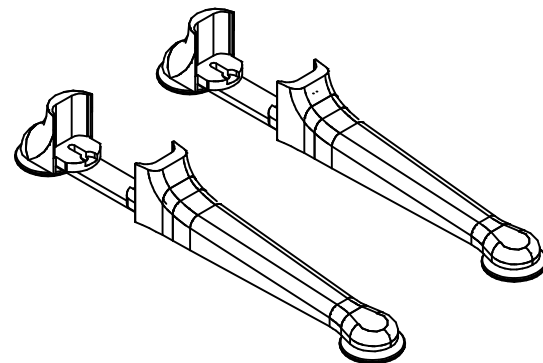
A WORKSURFACE



B CRANK BASE ASSEMBLY
QTY: ONE (1)



C FOOT ASSEMBLIES
QTY: TWO (2)

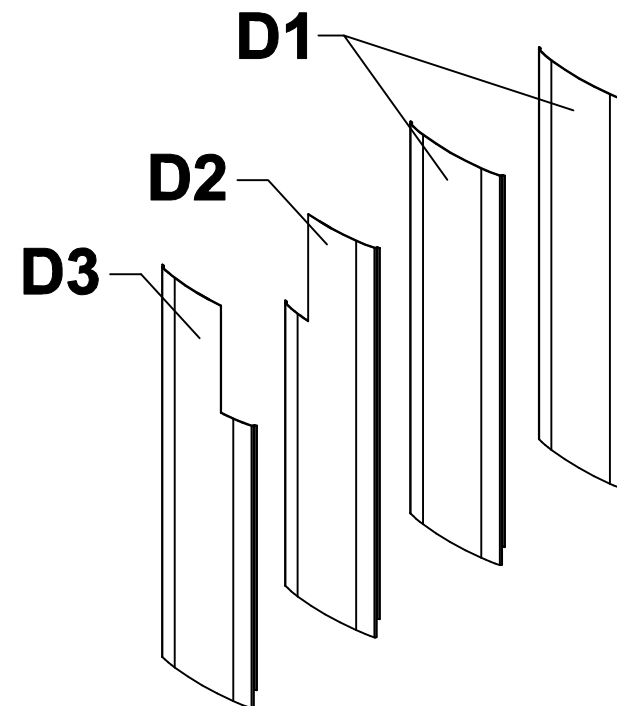


D COLUMN COVER INSERTS
QTY: FOUR (4)

D1 OUTSIDE (LARGE)
QTY: TWO (2)

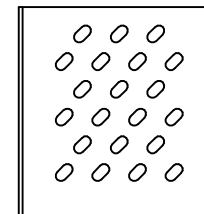
D2 INSIDE NOTCHED RH
QTY: ONE (1)

D3 INSIDE NOTCHED LH
QTY: ONE (1)

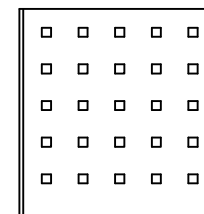


SOLID STEEL SHOWN

D1 OUTSIDE MAY BE PERFORATED

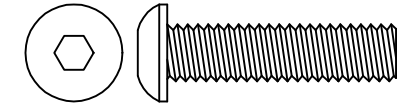


"RAIN" PERFORATION

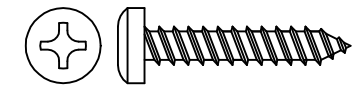


"CITY BLOCK" PERFORATION

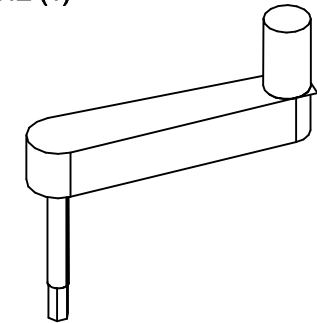
E 5/16-18 X 1 1/4" BUTTON HEAD
SOCKET CAP SCREW
QTY: FOUR (4)



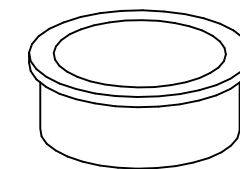
F #12 X 1 1/8" PAN HEAD SCREW
QTY: TEN (10)



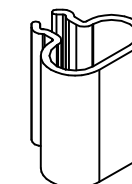
G CRANK HANDLE
QTY: ONE (1)



H CRANK HANDLE GROMMET
QTY: ONE (1)



I CORD CLIP
QTY: TWO (2)

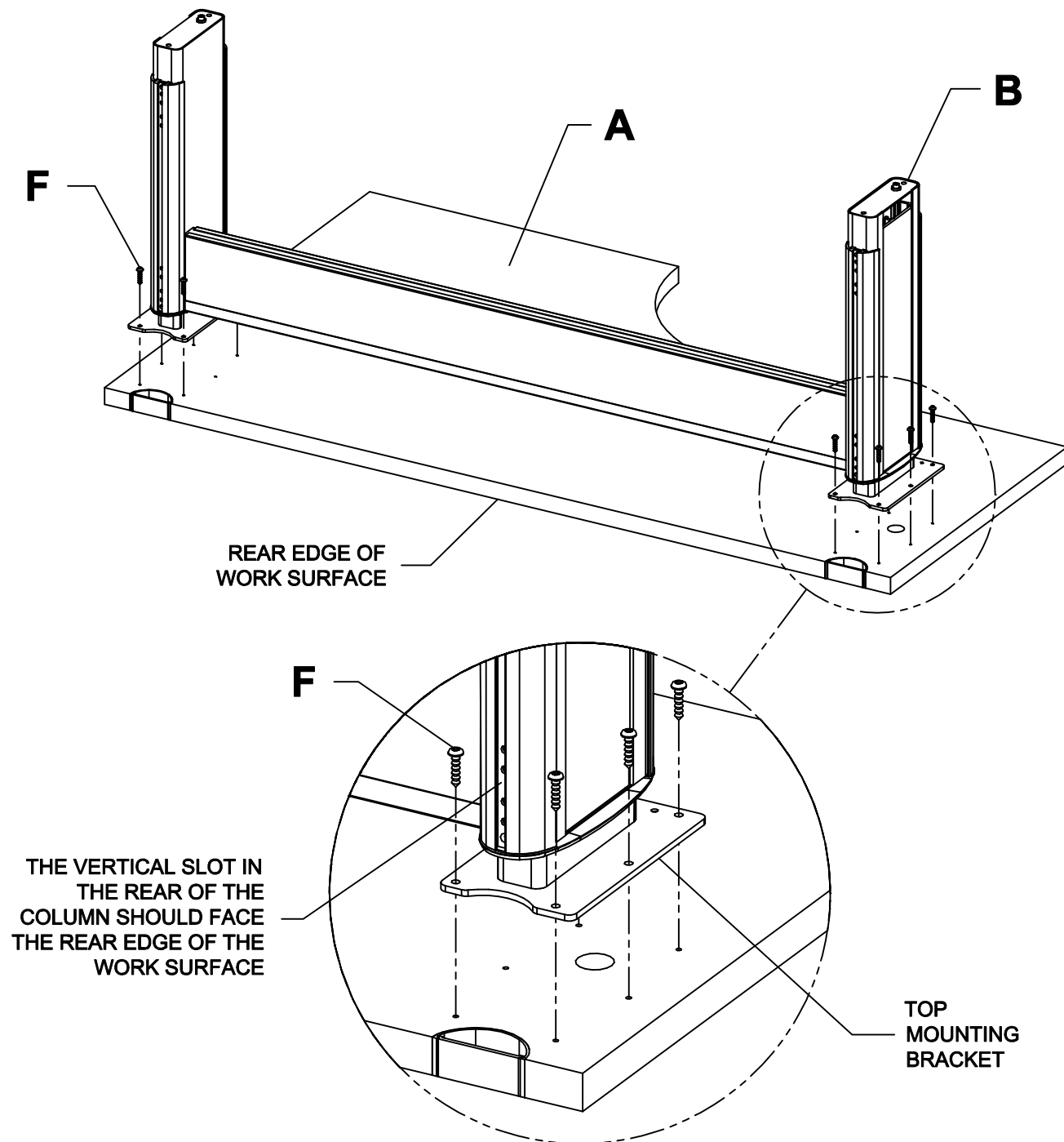


M COLLECTION - TOP CRANK HEIGHT ADJUSTABLE TABLE (THIN CROSS-LINK)

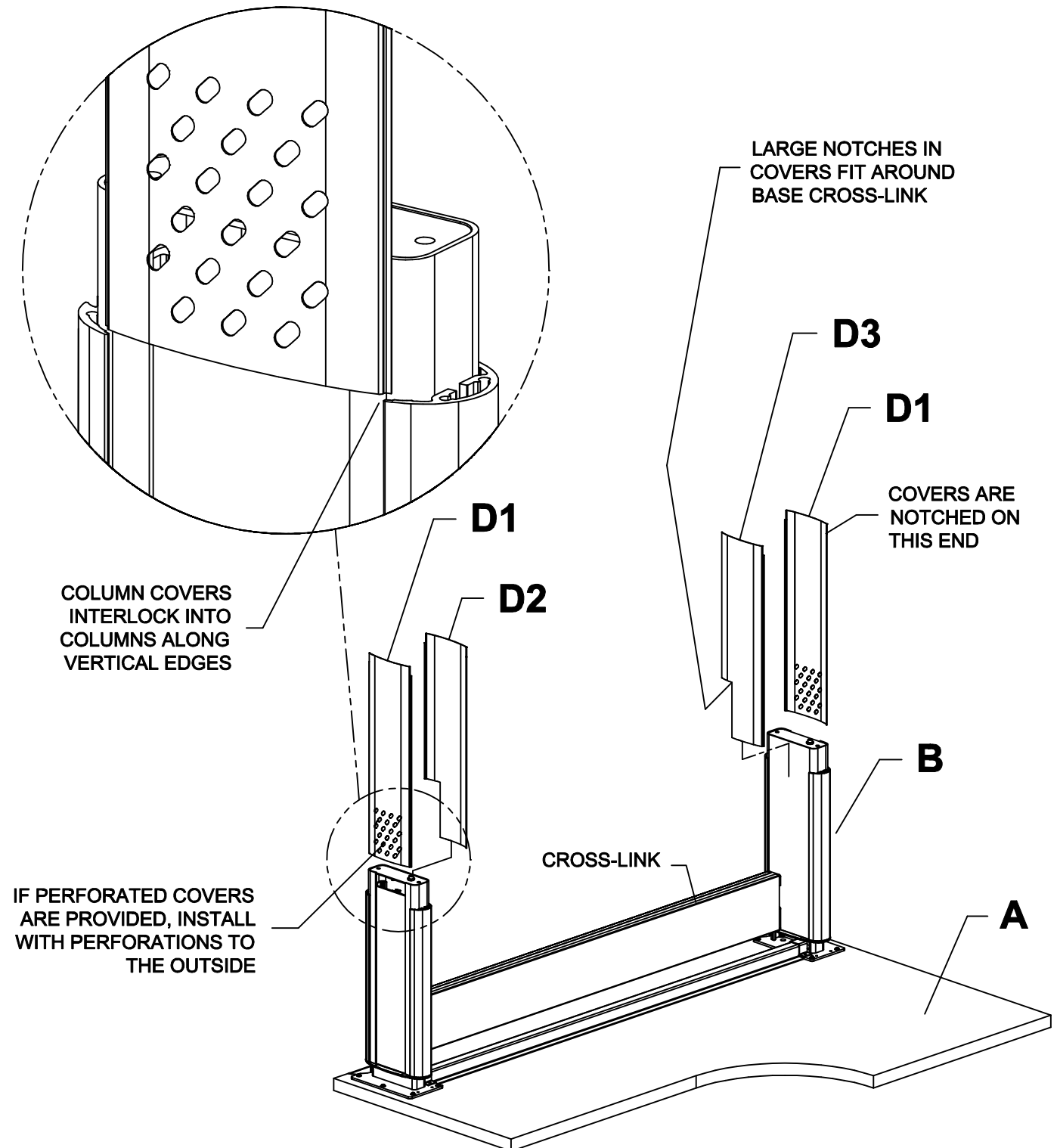
INSTALLATION INSTRUCTIONS

PROCEDURE:

- 1.** LAY WORK SURFACE UPSIDE DOWN ON A CLEAN SURFACE AND POSITION BASE OVER PRE-DRILLED HOLES. THE VERTICAL SLOTS IN THE REAR OF THE COLUMNS SHOULD FACE THE REAR EDGE OF THE WORK SURFACE. ATTACH BASE TO WORK SURFACE USING FIVE (5) # 12 X 1 1/8" PAN HEAD SCREWS IN EACH TOP MOUNTING BRACKET.



- 2.** INSERT COLUMN COVERS INTO BOTH SIDERS OF EACH COLUMN. INSTALL WITH NOTCHES AT ENDS OF COVERS AWAY FROM WORK SURFACE. IF PERFORATED COVERS ARE SUPPLIED, INSTALL WITH PERFORATIONS TO THE OUTSIDE.



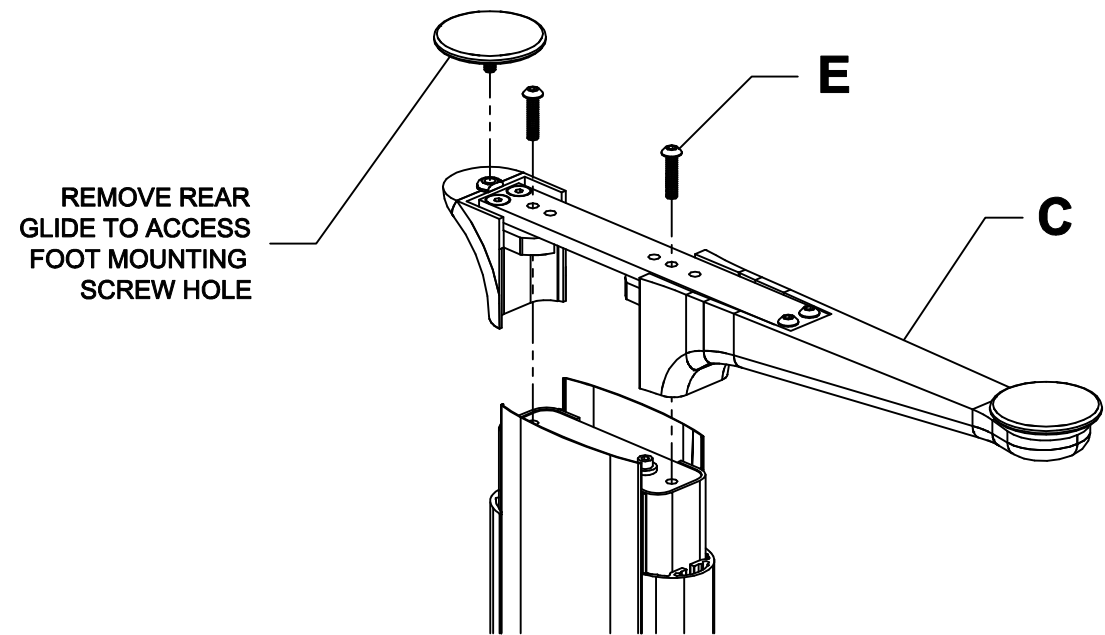
M COLLECTION - TOP CRANK HEIGHT ADJUSTABLE TABLE (THIN CROSS-LINK)

INSTALLATION INSTRUCTIONS

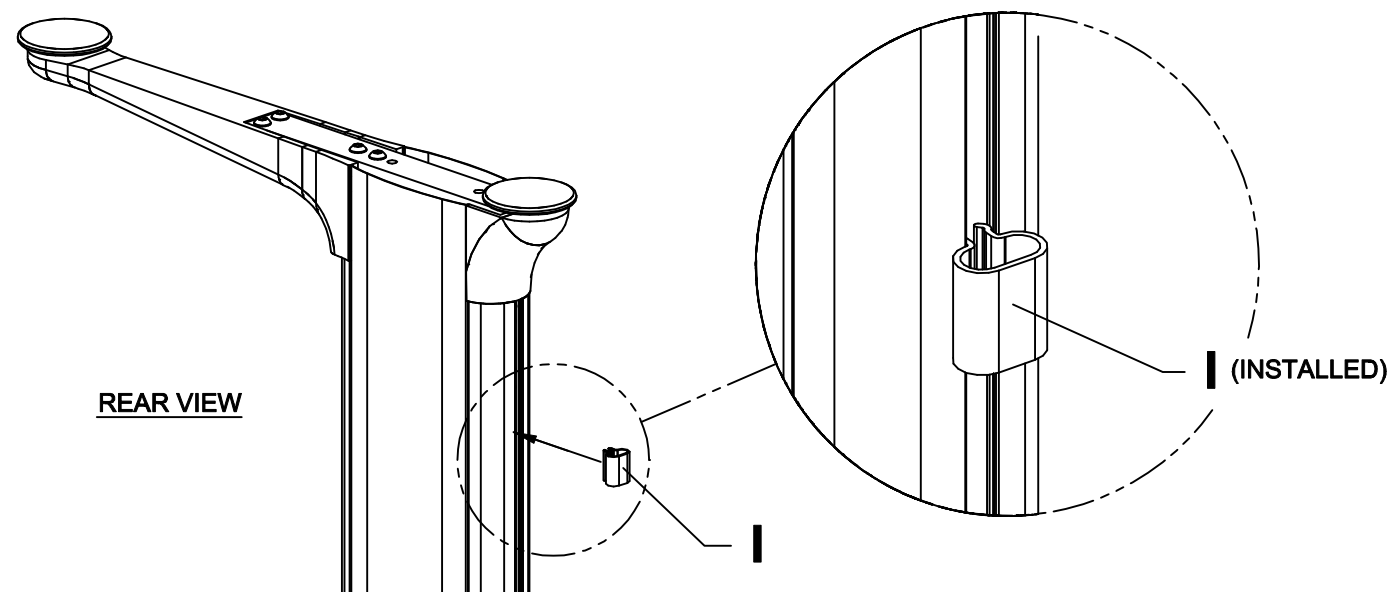
P/N 21134-01 SHEET 3 OF 3

PROCEDURE (CON'T):

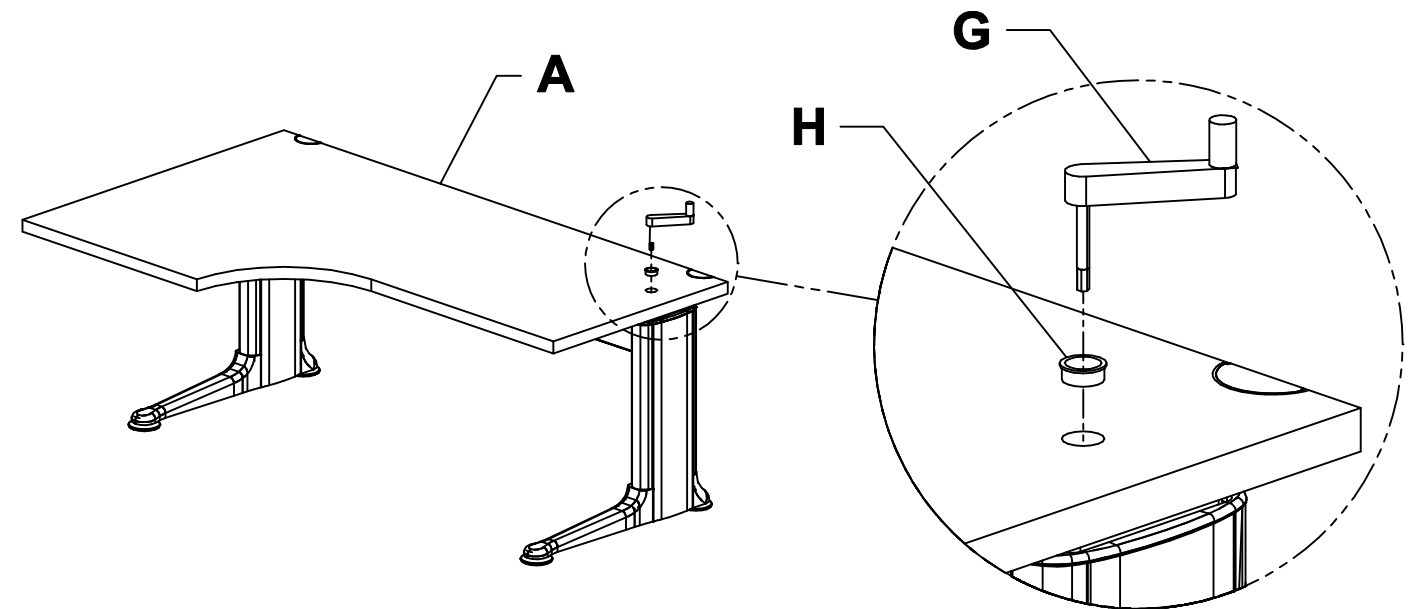
- 3.** ATTACH THE FEET USING TWO (2) 5/16-18 X 1 1/4" BUTTON HEAD SOCKET CAP SCREWS PER COLUMN. USE OUTSIDE MOUNTING HOLES IN FEET.



- 4.** CORD CLIPS SNAP FIT INTO VERTICAL SLOTS IN REAR OF COLUMNS



- 5.** PLACE GROMMET IN HOLE FOR CRANK HANDLE. INSERT CRANK HANDLE INTO HEX DRIVE HOLE.



- 6.** STAND TABLE UPRIGHT. MOVE TABLE INTO POSITION MAINTAINING PROPER CLEARANCE WITH ADJACENT SURFACES. ADJUST THE GLIDES TO LEVEL THE SURFACE.

